

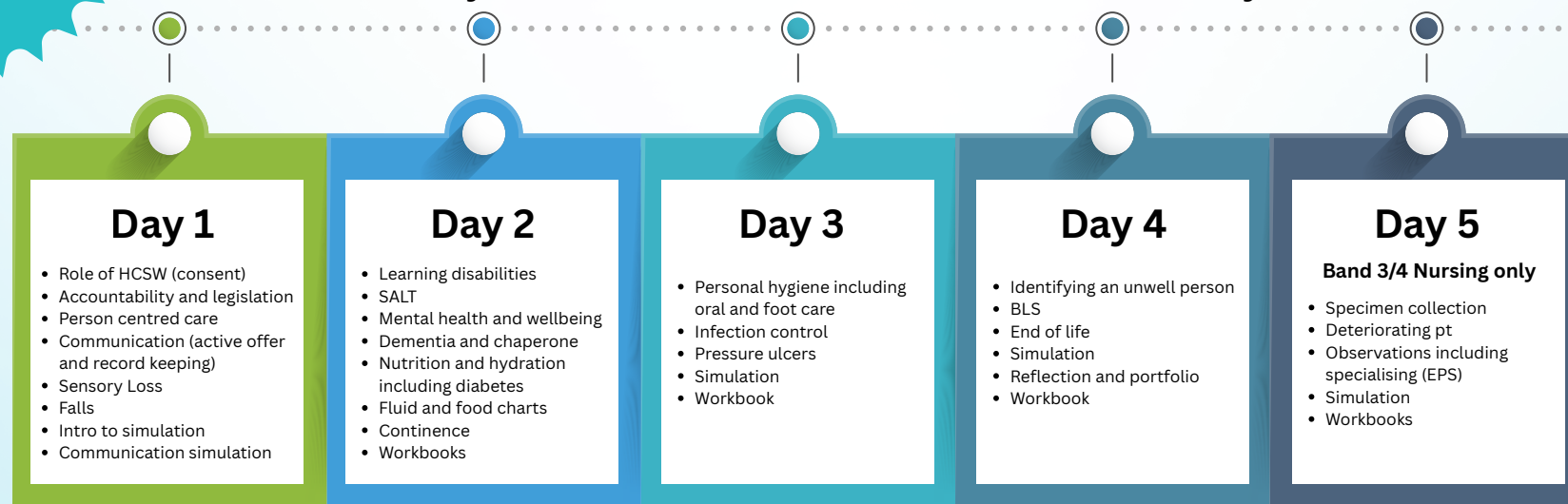
# Combined Acute and Community Clinical Induction

## for Nursing Support Workers

**NEW**

Band 2 = 4 day induction

Bands 3 & 4 = 5 day induction



- New assessment methods
- Reduced & relevant content
- Simulation incorporated

[Clinical.education.HDD@wales.nhs.uk](mailto:Clinical.education.HDD@wales.nhs.uk)

